

**Deliver  
Intelligent  
Management &  
Monitoring**



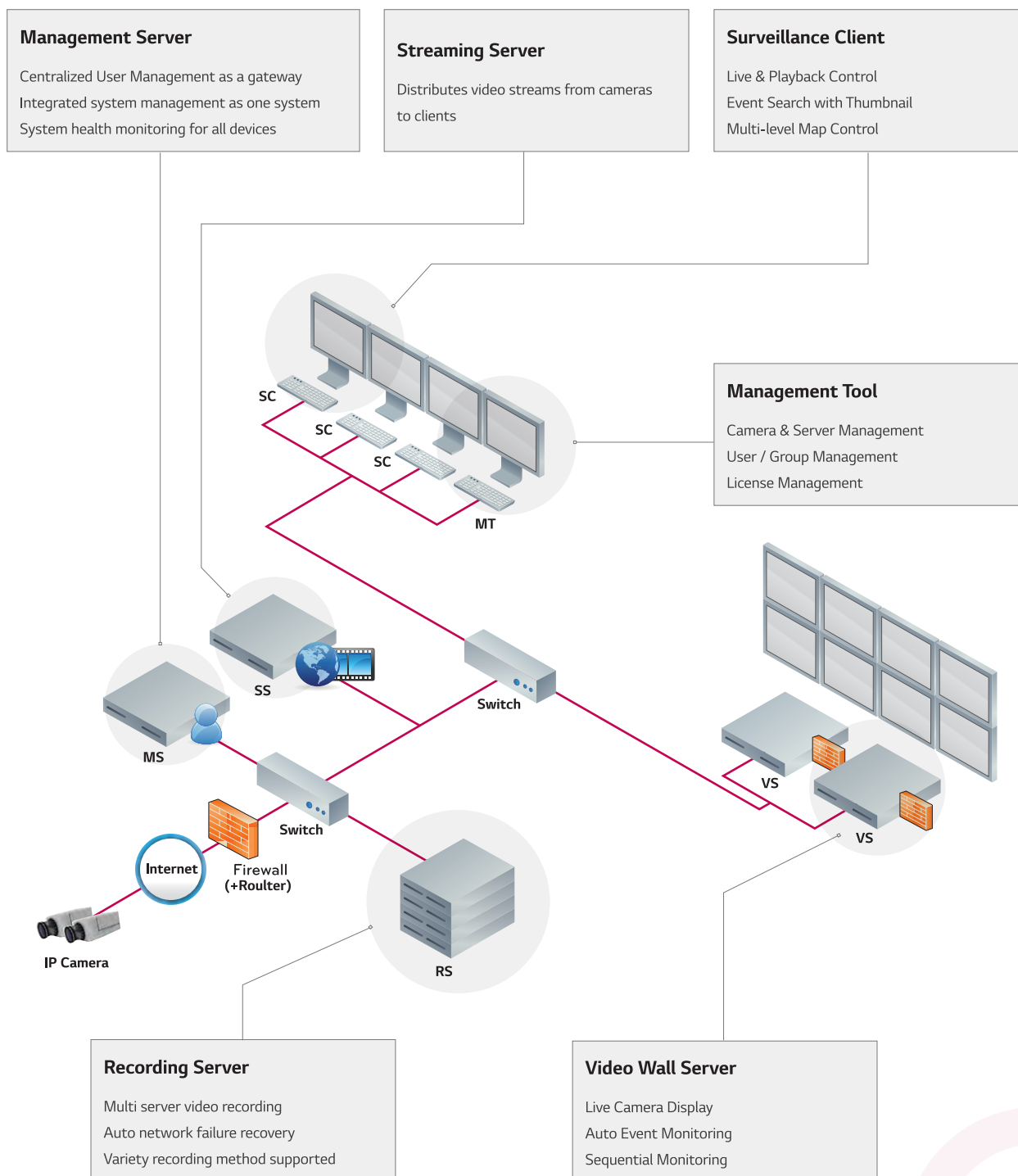
**SOFTWARE TECHNOLOGY  
VIDEO MANAGEMENT SUITE (VMS)**

## VIDEO MANAGEMENT SUITE (VMS)

The LG Ipsolute VMS is an IP-Surveillance software that works with LG IP cameras and the LG Video Server to provide live video monitoring, video recording, video playback, settings, and event management functions.

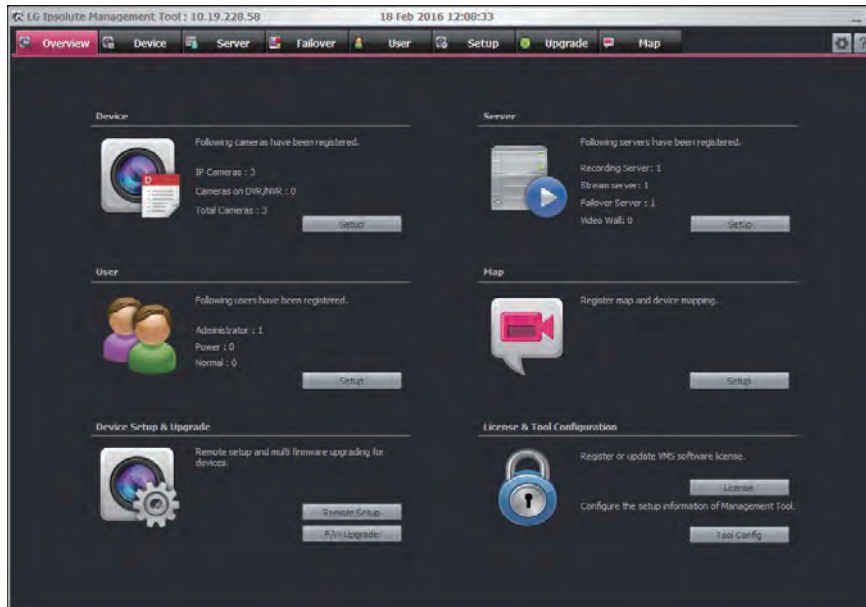
The software has search functions for recorded events. Remote viewing and playback are also possible with the use of the Video Management Suite.

### System Guide



## Management Tool

Users can easily check system overview on overview page. It is simple and gives intuitive user interface so that even unprofessional users can use easily.



### Device

Displays the number of registered IP cameras and DVRs.

### Server

Displays the number of registered recording servers and streaming servers.

### User

Displays the number of registered users by user group.

### MAP

Register map and device mapping

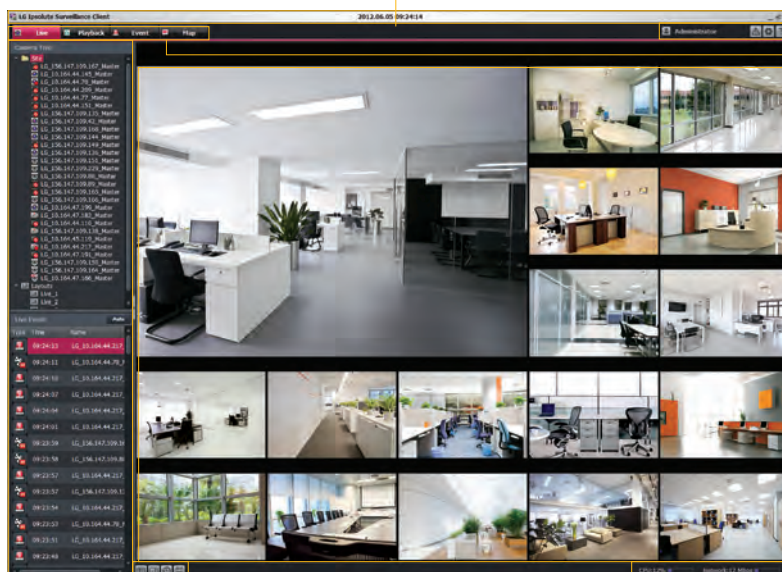
### Device Setup & Upgrade

Remote setup and multi-firmware upgrading for device.

### License & Tool Configuration

Register or update VMS software license.

## Surveillance Client Overview



### Title Bar and Menu

Title bar with local time and software function menu (mouse right click)

### Login Information and System Button

Login information, software log, setup, and help button

### TAB

Each tab has its own operational features (live, playback, event and map).

### Workspace

Live video, recording video, retrieved events and map(varied according to the tab).

### CPU / Network Performance

CPU / Network Performance of the Computer with Surveillance Client Software

### Tree and List

Camera tree, live event list, and map tree (varied according to the tab).

### Control Button

Workspace control button such as camera division and video export.



## Surveillance Client \_ Live

Users can watch live video of a selected IP device.



### Camera Tree

Pre-configured camera tree is displayed with camera connection status.

### Auto

Event-occurred camera will be displayed on the screen automatically.

### Action Button

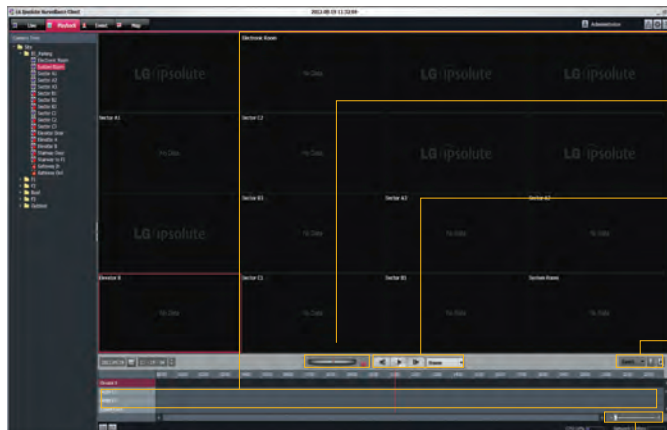
- Division
- Hotspot
- Sequence
- Save Layout

### Live Event

Events on cameras that are displaying are listed in real-time.

## Surveillance Client \_ Playback

Users can play back the recorded data of a selected IP device.



### Multi Timeline Display

Max 64 cameras can be displayed with color-classified timeline according to the recording type.

### Playback Speed Control

Jog shuttle type fast forward and rewind control.

### Frame By Frame / Play & Pause

- Step forward and backward by frame and 10, 60, 120 sec unit.
- Step to next event
- Step to next bookmark.

### Event

Type of events can be selected.

### Zoom In / Out

Timeline zoom in and out

## Surveillance Client \_ Event

Users can search event log history, playback event data and check the map.

## Surveillance Client \_ Map

This function gives a visual overview of the device in your surveillance environment.

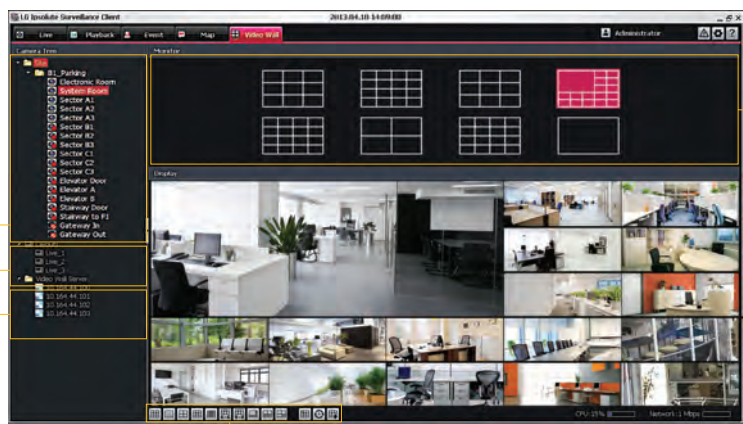
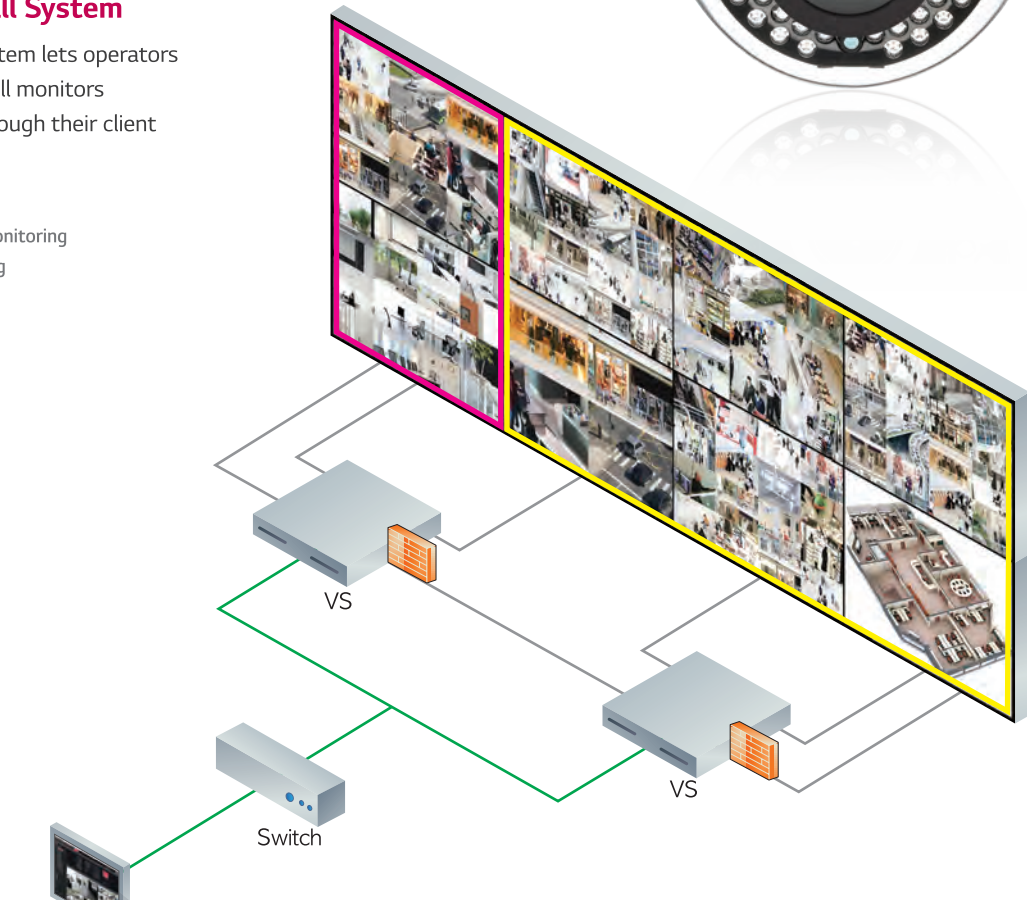


**VMS Video Wall System**

VMS Video Wall System lets operators control the video wall monitors in control center through their client software.

- Sequencing Monitoring
- Live Monitoring

- RGB
- LAN



**Camera Tree \_ Video Wall Server**

Display Video Wall Server's list

**Camera Tree \_ Layout**

Display layout list, that is registered for the selected monitor.

**Camera Tree \_ Site**

Pre-configured camera tree is displayed with camera connection status.

**Action Button**

Configure several settings quickly using the Action Button

- Division mode changing
- Auto Event monitoring
- Layout and sequence monitoring

**Monitor**

When selecting a Server, the virtual monitor icon will be changed in the Monitor Window

### FEATURES

- Device Finder
- Device (IP Camera & DVR) Remote Setup
- Real-Time Recording Server Monitoring
- Recording Calculator
- Real-Time Streaming Server Monitoring
- 256 Channels Live Monitoring with Video Buffering
- Multiple Device Firmware Update
- Multiple Playback at the Same Time
- Event Thumbnail Search
- Instant Playback
- Digital Zoom
- Camera Pan / Tilt / Zoom Control (Mouse, Joystick Support)
- Map Support
- AVI File Export
- Intelligent Video Analytics Event Detection
- Map and Event Live Popup Display
- 320 Channels Recording, 256 Channels Streaming



### SPECIFICATIONS

Overview	Client	Surveillance Client, Management Tool, Web Client
	Servers	Management Server, Recording Server, Streaming Server
	Access	Local and Remote
	Licensing	License Key
	Solution Approach	Distributed Server Architecture
	Language	English, Korean, Japanese, Chinese, Portuguese, Turkish
	Operable OS	Microsoft Windows 7 Professional or Ultimate 32-bit/64-bit Microsoft Windows 8, 8.1 Professional or Ultimate 32-bit/64-bit Microsoft Windows 10 Professional or Ultimate 32-bit/64-bit Microsoft Windows Server 2008 Standard Edition SP2 32-bit/64-bit Microsoft Windows Server 2008 Enterprise Edition SP2 32-bit/64-bit Microsoft Windows Server 2008 Standard/Enterprise Edition R2 32-bit/64-bit Microsoft Windows XP Pro SP2/SP3 32-bit/64-bit Microsoft Windows Server 2012 R2
	Control Panels	Live, Playback, Event Search, Map
	Max. Channels	256
	Multi Monitor Support	Yes
	Pre-defined Screen Format	Yes
	CPU and Network Usage	Yes
	Device	Device Group
Interactive E-Map		Yes
Device Setup		Yes
Device Search		Yes
Multi Device Upgrade		Yes
Device Grouping		Yes
User	Map Integration	Yes
	Recording Calculator	Yes
	User Grouping	Yes
Maintenance	Detailed Access Authority	Yes
	Camera Health Monitoring	Yes
Recording	Server Health Monitoring	Yes
	Number of Cameras	320
	Max. Bandwidth	300 Mbps (Based on Gigabit Ethernet)
	Recording Frame Rate	Real-Time for all channels
	Time Scheduled Recording	Yes
	Event Triggered Recording	Yes
	Pre-Event Recording	Yes
Instant Recording	Yes	

Recording	Failover	Yes
	Audio Recording	Yes
Streaming	Max. Channels	256
	Max. User	50
	Max. Bandwidth	300 Mbps (Based on Gigabit Ethernet)
Live	PTZ Control	Yes
	Full Screen	Yes
	Event Monitoring	Yes
	User-defined Layouts	Yes
	Layouts Rotation Monitoring	Yes
	Auto Event Monitoring	Yes
	Digital Zoom	Yes
	Hotspot	Yes
	Instant Playback	Yes
	Instant Recording	Yes
Playback	Two-way Audio	Yes
	Dynamic Stream Changing	Yes
	Date/Time Search	Yes
	Calendar Search	Yes
	Timebar Search	Yes
	Zoomable Time Table	Yes
	Multi Channel Time Table	Yes
	Jog Shuttle	Yes
	Playback Control	Play, Forward, Backward, Pause
	Step Playback	Frame, 10Sec, 30Sec, 1Min, 5Min, Event, Bookmark
Event	Video Export	AVI, DAT (LG)
	Image Export	JPEG
	Event Search	Yes
	Digital Zoom	Yes
	Bookmark	Yes
	Instant Playback	Yes
	E-Map Integration	Yes
Map	Thumbnail Image	Yes
	Multi-Map Monitoring	Yes
	Event Alert (Sound) on Map	Yes
	Live & Playback Intergradation (Live Popup)	Yes

※ Exact products and specifications shown may vary by geographic region and are subject to change without notice. Actual products may differ from the images appearing in the catalog.